

PACIFIC STANDARD TIME EXHIBITS



R.M. Schindler
Dresser with Mirror
(*Shep Commission, 1935*)
Gumwood, mirror
(70 1/2" h, 105" w,
26 3/8" d)



Greta Magnusson
Grossman
Desk (c. 1952)
Walnut, Iron,
formica
(47 5/8" h, 23 3/4" w,
40" d)

It is *Pacific Standard Time* in Southern California. This refers not only to the annual time change, but to the extraordinary arts festival taking place across the region. Over 60 art and cultural organizations, in addition to various galleries, are cooperating in celebrating the spectrum of creativity that emerged during the post-World War II era in this region and helped shape the culture of the entire country.

There are seven venues focusing on the decorative arts, highlighting craftsmanship in wood and other craft media by California designers and makers. The early part of this time frame is being addressed at the **Los Angeles County Museum of Art (LACMA)** in its exhibition *California Design 1930-1965: Living in the Modern Way*. This was the period when California experienced tremendous growth, with millions of new residents needing homes and furnishings. After years of deprivation from the depression and the war, the Golden State, with its benign climate, offered the prospering population a place to start over. California embodied the "good life," and the resulting California

design, as **Greta Magnusson Grossman** explained, "was not a superimposed style, but an answer to present conditions... It developed out of our own preferences for living in a modern way."

The exhibit features more than 350 objects of furniture, textiles, fashion, graphics and industrial design, ceramics, jewelry, metalwork, architectural drawings, and film. It is a mix of hand-crafted work and designs for manufactured goods. In addition, it includes the relocation of the living room of designers **Charles** and **Ray Eames**, from their home in Pacific Palisades. More focused examinations of the Eames legacy are explored at the **A+D Architecture and Design Museum** and at the **Eames House Foundation** (see *On Exhibit* for details).

The LACMA exhibit runs thru Mar. 25 and is documented in a 360-page catalogue, with a variety of essays by leading architecture and design historians. In addition, an all-day program on *The Legacy of the California Design Exhibitions: Creating a Forum for Craft and Design* is being held on Nov. 12. For info, visit the website, www.lacma.org or call: (323) 857-6000.



John Kapel
Chair (c. 1958)
Walnut, leather
(46 3/4" h, 30 1/2" w, 26 1/2" d)

Eames Living Room relocated for display at the Los Angeles County Museum of Art



PACIFIC STANDARD TIME EXHIBITS



Arthur Espenet
Carpenter
Wishbone Chair
(1972)
Shedua wood,
leather strapping
(31 1/4" h, 22" w,
22 1/2" d)



John Dirks
Ibex
Teak
(28" h, 11" w, 2" d)



John Nyquist
*Music Stand with
Double Ledge* (c. 1979)
Teak, Rosewood, Ivory,
(61" h, 22" w, 17" d)

Photo: John Walick

The **Craft and Folk Art Museum** in Los Angeles takes a later look at California design in *The Golden State of Craft: 1960-1985*, thru Jan. 8. This exhibit, including approximately 75 functional and decorative pieces, focuses more on the studio artists working in wood, glass, clay, textile, and metal. The wood artists include **Garry Knox Bennett**, **J.B. Blunk**, **Arthur Espenet Carpenter**, **John Cedarquist**, **Frank Cummings Jr.**, **John Kapel**, **Sam Maloof**, **John Nyquist**, **Svetozar Radakovics**, **Bob Stocksdale**, **Paul Tuttle**, and **Pamela Weir-Quiton**.

The museum holds a *Traditional Japanese Woodcarving* workshop with **Yo Takimoto** on Nov. 20, and the **Craft in America Study Center** hosts a lecture series, with future presentations by **Katie Nartonis** on *The Hand-Built Studios of Craftsman Arthur Espenet Carpenter* (Nov. 10) and by **Garry Knox Bennett** on *The 60's & 70's: The Right Place - Right Time* (Nov. 17). For info on the CAFAM exhibit, visit the website www.cafam.org or call: (323) 937-4230. For the *Craft in America* lecture series, visit the website: www.craftinamerica.org or call: (323) 951-0610.

The **Mingei International Museum** in San Diego also features hand-made craftsmanship in *San Diego's Craft Revolution: From Post-War Modern to California Design*, thru Apr. 15. This multi-media exhibit features over 60 artists, including wood sculpture by **John Dirks**. A panel discussion on *San Diego Craft: Then & Now* will be held on Nov. 6, featuring local designers **Larry Hunter**, **Wendy Maruyama** and **Tanya Aguiñiga**. For info, visit the website: www.mingei.org or call: (619) 239-0003.



John Cedarquist
The Game Table (1982)
Maple, Purpleheart, Inlay, dye,
Birch plywood
(48" h, 32" w, 2" d)

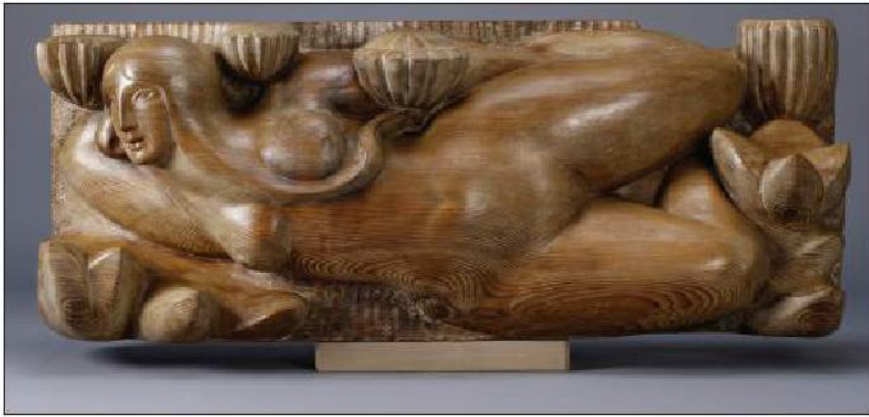


Pamela Weir-Quiton
*Georgie Girl Seated
Doll* (1970)
Brazilian Rosewood,
Zebrawood, Maple, Ebony
(58" h, 16" w, 30" d)



Photo: Mike Sasso

PACIFIC STANDARD TIME EXHIBITS



John Svenson
Sea Sprite (1967)
Redwood
(20" h, 52 1/2" w, 14" d)



Bob Stocksdale
Bowl (1979)
California Macadamia
(4" h, 6 1/2" dia)

The House that Sam Built
exhibition at The
Huntington Library
In San Marino, CA.

Of course, you cannot speak of mid-century California furniture without mentioning **Sam Maloof**, and it is fitting that he is represented in all the previously-mentioned exhibitions. However, he is given further prominence in *The House that Sam Built* at **The Huntington Library** in San Marino, thru Jan. 30.

This exhibit consists of 35 significant furniture pieces that Sam constructed from the 1950s-1985. Lesser known on display are a pair of water color paintings, done during his graphic artist career.

His work is accompanied by 85 pieces in various media, created by his friends and colleagues, most from the nearby college town of Claremont, CA. A piece attracting great attention at the opening was *Sea Sprite*, a Redwood carving by **John Svenson**.

Additional Maloof pieces are being exhibited in *In Words and Wood* at the **Maloof Foundation for Arts and Crafts** in Alta Loma, CA, thru Jan. 28. Also on display are 30 vessels by noted turned wood artists **Bob Stocksdale** and **Ed Moulthrop**, from his personal collection.

For info on The Huntington Library exhibit, visit the website: www.huntington.org or call: (626) 405-2100. For info on the Maloof Foundation exhibit, visit the website: www.malooffoundation.org or call: (909) 980-0412.

